



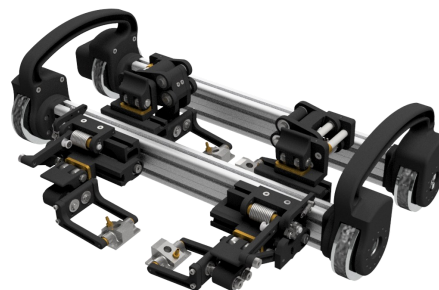
XS “Switchgear” Scanner Configurations

Manual

Fixed Probe



XSW-300M2

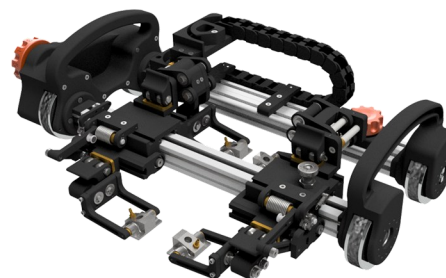


XSW-300M4

Raster

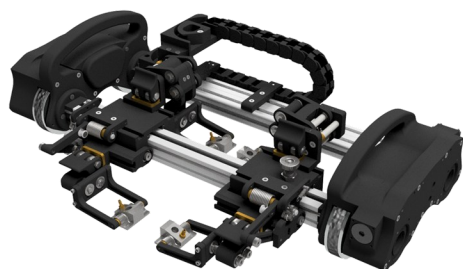


XSR-300M1



XSWR-300M4

Automated



XSWR-300A4



XSR-300A1

Features:

The XS system allows you to adapt and upgrade the scanner as your needs evolve, reducing startup, upgrade, and maintenance costs. Choose a fixed probe setup to allow for consistent offsets during weld inspections or use an Automated Raster system to provide a hands free inspection for multiple scans as in corrosion mapping.

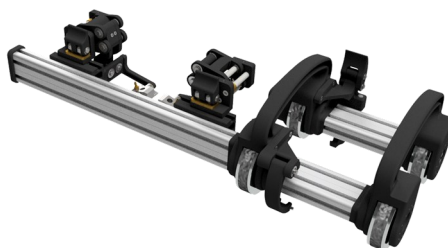


XS “Switchgear”

Specialty



XS - Crawler
Automatic, steerable Scanner
with 4-wheel drive



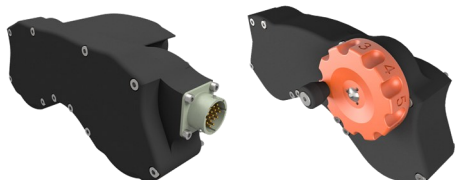
XSWO-300M2-C
Manual, 12in / 300 mm
overhanging weld scanner with
chain attachment



XSWO-300A2
Automatic, 12in / 300 mm
overhanging weld scanner with
phased array and TOFD
transducers

Drive Units

The motor drive packs are available in manual and automatic versions and are designed for weld and raster scans. They are environmentally sealed and utilize strong, neodymium magnets to provide accurate positioning and control.



Raster pack.
Automated and Manual



Drive Pack
Automated and Manual



Four Wheel Pack
Automated and encoded. Ideal in situations where an overhang arm is needed and placement of wheels is limited. Similar to inspection near flanges.

Features:

1-6 probe support. Each part is interchangeable extending the capability of your scanner. Custom Lengths available as well as transducer mounts. (Single element, dual element, TOFD, or phased array). Chain attachment available for non-magnetic pipe inspection.



XS “Switchgear” Modules

Accessory Rail

Provides secure mounting for probes guides.
Available in stationary, manual and automated raster, all in standard or custom lengths.

(6 / 9 / 12 / 24 in.)
(150 / 200 / 300 / 600 mm).



Probes Guides and Transducers

The probe guides are engineered for a variety of applications and provide a constant force on a variety of pipe sizes. Configurations range from 1 to 6 probes allowing for different types of ultrasonic scans (TOFD, phased array, single element, and dual element).



Chain Module

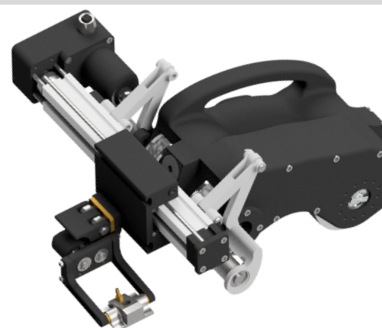
The chain module can be added to the XS “Switchgear” scanners to make it capable of scanning non-ferrous pipes.



In Development

Our almost infinitely configurable design opens the possibility to automate any Inspection.

- C-scan in low clearance locations
- Long Seam inspection
- Casings
- Etc.



Applications Available:

- | | |
|-----------|------------|
| • Pipes | • Welds |
| • Tanks | • Training |
| • Vessels | • More |